

ABx REE discoveries across northern Tasmania Hole location update

ABx Group Limited (ASX: ABX) provides further drilling information required for the two new discoveries of rare earth elements (REE) (ASX release 10/02/2022) at Portrush project and Wind Break project in northern Tasmania.

Drillhole location data including coordinates and geometry of each hole as well as the down hole length and interception depth is provided in accordance with the Joint Australasian Code for Reporting of Exploration Results, Mineral Resources and Ore Reserves (JORC Code), Table 2, "Drill hole information".

The three ABx REE discoveries

ABx is an emerging hi-technology and explorer-developer company that is the first company to discover clay-hosted REE in northern Tasmania, initially at Deep Leads project.

ABx's recent two new discoveries at Portrush project and Wind Break project confirm that ABx has discovered REE mineralisation in three separate locations across a distance exceeding 52 km (see Figure 1). The three discoveries to date are:

1. **Deep Leads project** (first reported in ASX release 9/02/2021 and several updates)
2. **Wind Break project** located 16 km northeast of Deep Leads (new discovery)
3. **Portrush project** located 52 km east of Deep Leads (new discovery)

Data already reported in ASX release dated 10/02/2022

As reported in the release, all holes are "short, straight, vertical holes". The Table of drilling results in the release showed all downhole length and interception depths.

The release also reported that all holes ended still in the mineralisation, so therefore the deepest assay depth was the bottom of hole.

Additional information

Table 1: The eastings, northings, collar RL and hole geometry are all provided in Table 1 below as well as all other location information for the relevant drill holes.

Figures 1 to 4: Location information has been added to the maps that show the drilling results – see Figures 1 to 4.

This announcement is approved for release by the board of directors.

For further information please contact:

Dr Mark Cooksey

CEO, ABx Group

Mobile: +61 447 201 536

Email: mcooksey@abxgroup.com.au Website: abxgroup.com.au

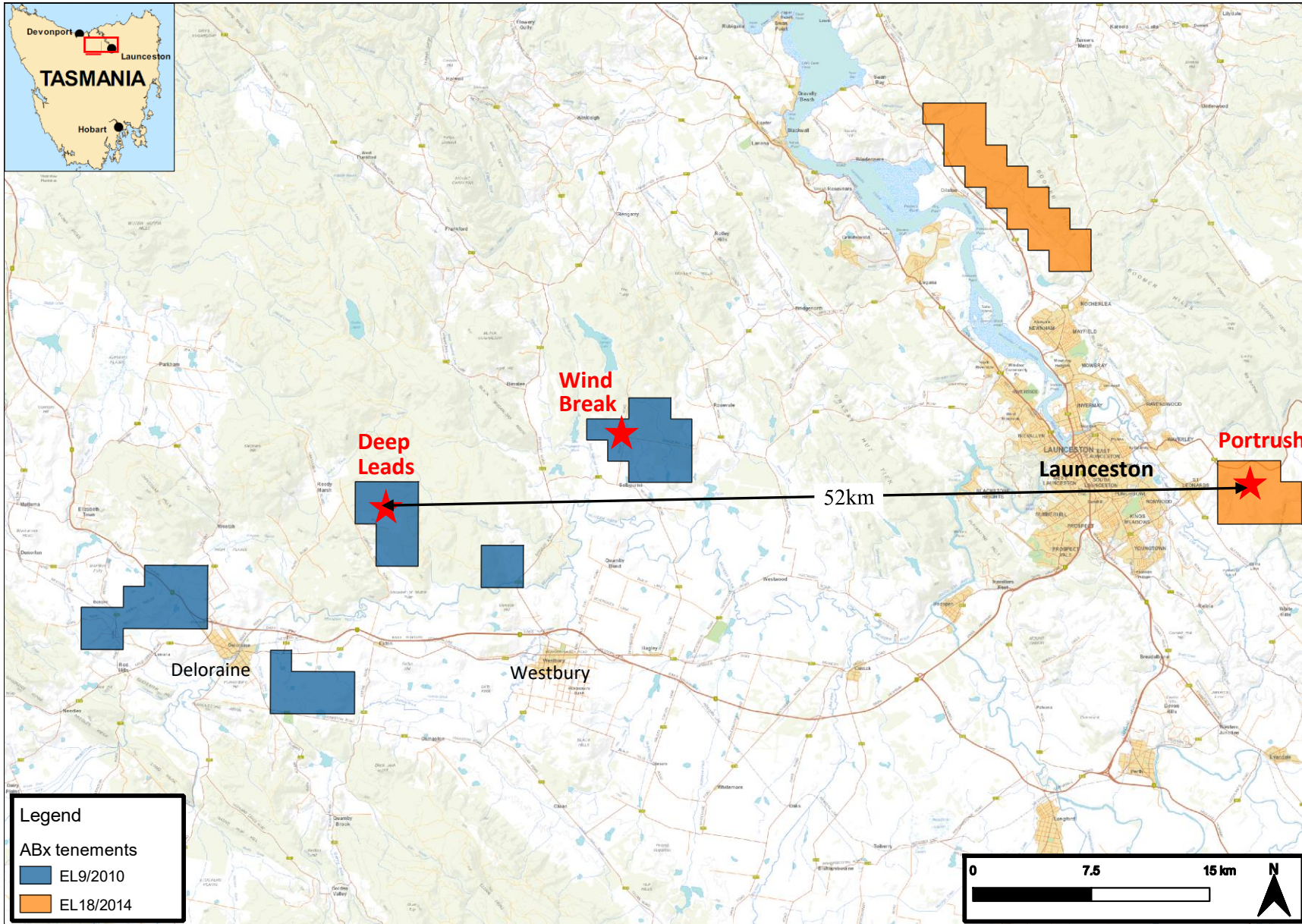


Figure 1: ABx leases and REE prospects in northern Tasmania.

Portrush REE discovery is 52km east of Deep Leads

Wind Break REE discovery is 16km northeast of Deep Leads

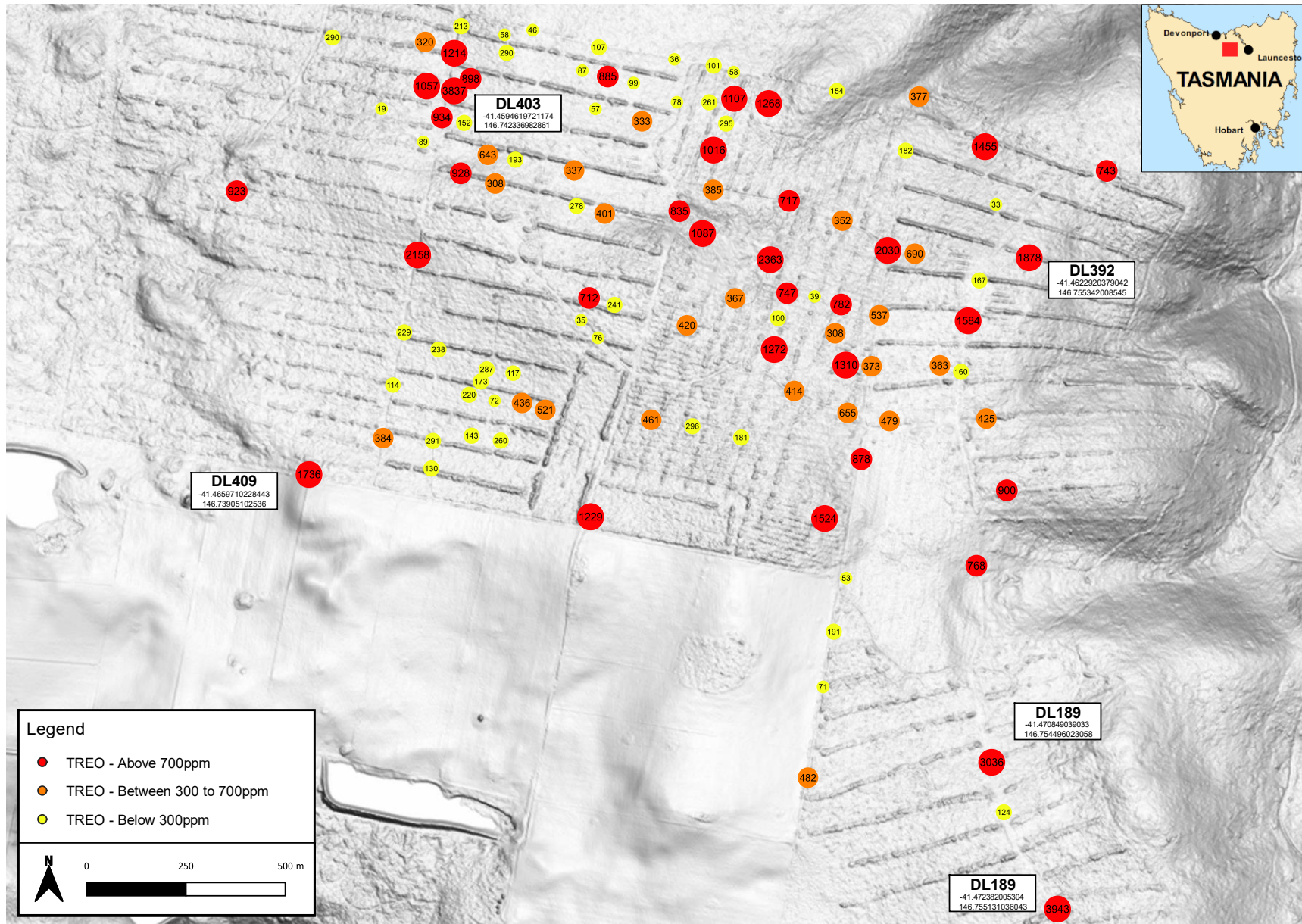


Figure 2: Deep Leads drillholes with highest REE grades shown as total rare earth oxide (TREO)

Latitudes and longitudes are shown for four materially important discovery drillholes

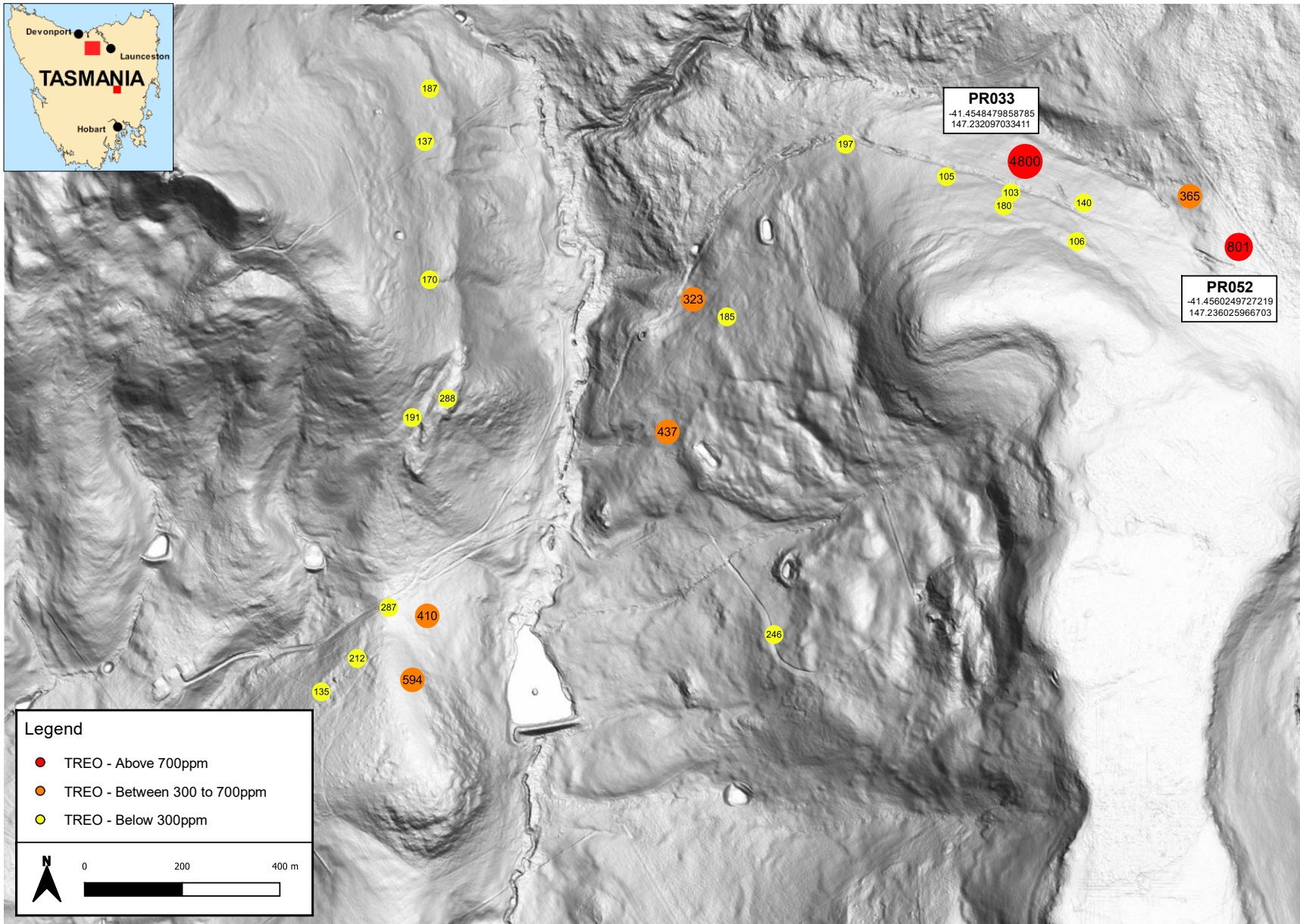


Figure 3: REE discovery holes at Portrush REE Project located 52km east of Deep Leads.

Drillholes with highest REE grades are shown as total rare earth oxide (TREO)

Latitudes and longitudes are shown for two materially important discovery drillholes

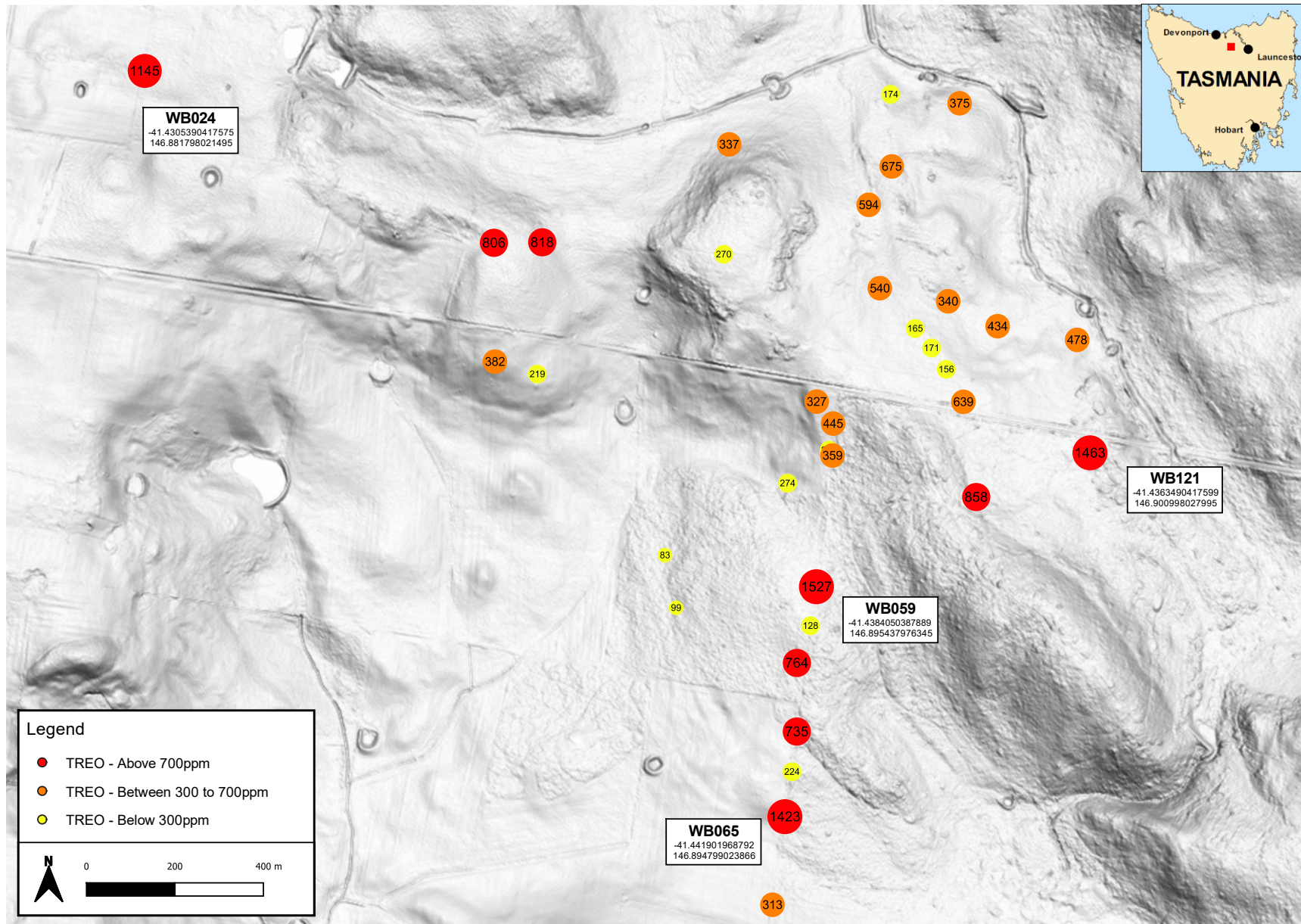


Figure 4: REE discovery holes at Wind Break REE Project located 16km east of Deep Leads

Drillholes with highest REE grades are shown as total rare earth oxide (TREO)

Latitudes and longitudes are shown for four materially important discovery drillholes

Table 1: Drill Hole Information

DEEP LEADS RARE EARTH ELEMENTS PROJECT DRILLHOLES

Hole	Coordinates (GDA94)			Hole length m	WGS84 55S		Hole Direction		Hole	Coordinates (GDA94)			Hole length m	WGS84 55S		Hole Direction	
	Easting	Northing	Collar RL Elevation		Latitude	Longitude	Azimuth	Dip		Easting	Northing	Collar RL Elevation		Latitude	Longitude	Azimuth	Dip
DL130	478830	5409673	360	10	-41.464255	146.74649	0	-90	DL237	478597	5410075	329	9	-41.460632	146.74372	0	-90
DL131	478754	5409740	362	13	-41.463648	146.74558	0	-90	DL238	478545	5410084	326	8	-41.460549	146.74310	0	-90
DL132	478684	5409812	358	15	-41.463002	146.74475	0	-90	DL239	478491	5410094	331	8	-41.460452	146.74246	0	-90
DL133	478613	5409883	319	9	-41.462355	146.74390	0	-90	DL240	478596	5410008	327	9	-41.461235	146.74370	0	-90
DL134	478553	5409966	316	9	-41.461614	146.74319	0	-90	DL243	478557	5409729	313	9	-41.463745	146.74323	0	-90
DL135	478494	5410049	313	9	-41.460864	146.74248	0	-90	DL244	478544	5409680	309	7	-41.464190	146.74307	0	-90
DL136	478423	5410108	313	8	-41.460324	146.74163	0	-90	DL245	478511	5409632	312	8	-41.464619	146.74267	0	-90
DL137	478344	5410170	308	4	-41.459766	146.74069	0	-90	DL247	478443	5409545	290	6	-41.465401	146.74185	0	-90
DL138	478789	5409581	317	9	-41.465081	146.74600	0	-90	DL248	478440	5409493	315	7	-41.465865	146.74182	0	-90
DL139	478755	5409482	309	9	-41.465977	146.74558	0	-90	DL253	478502	5409708	319	9	-41.463934	146.74256	0	-90
DL149	478349	5409550	302	9	-41.465353	146.74073	0	-90	DL254	478453	5409717	316	7	-41.463849	146.74199	0	-90
DL150	478367	5409650	311	6	-41.464451	146.74095	0	-90	DL256	478500	5409803	328	9	-41.463080	146.74255	0	-90
DL151	478388	5409749	314	6	-41.463560	146.74120	0	-90	DL257	478446	5409884	328	9	-41.462341	146.74190	0	-90
DL152	478405	5409855	313	7	-41.462603	146.74141	0	-90	DL258	478473	5410000	325	9	-41.461302	146.74223	0	-90
DL153	478428	5409982	312	9	-41.461466	146.74170	0	-90	DL259	478466	5409955	325	9	-41.461705	146.74215	0	-90
DL155	478876	5409879	318	9	-41.462405	146.74705	0	-90	DL260	478505	5409939	326	9	-41.461851	146.74262	0	-90
DL156	478907	5409979	313	7	-41.461498	146.74742	0	-90	DL261	478544	5409889	333	9	-41.462306	146.74307	0	-90
DL157	478855	5410092	322	9	-41.460486	146.74681	0	-90	DL266	478602	5409715	326	9	-41.463869	146.74376	0	-90
DL161	478575	5410333	318	8	-41.458307	146.74346	0	-90	DL269	478643	5409662	325	9	-41.464351	146.74426	0	-90
DL162	478481	5410275	315	9	-41.458821	146.74234	0	-90	DL270	478594	5409673	328	6	-41.464254	146.74366	0	-90
DL163	479035	5410240	311	9	-41.459158	146.74897	0	-90	DL272	478863	5409829	335	9	-41.462853	146.74689	0	-90
DL164	478935	5409658	321	9	-41.464395	146.74775	0	-90	DL273	478885	5410135	313	9	-41.460099	146.74717	0	-90
DL165	479029	5409676	314	9	-41.464232	146.74888	0	-90	DL274	478902	5410184	317	9	-41.459651	146.74737	0	-90
DL166	479125	5409641	310	3	-41.464555	146.75002	0	-90	DL276	478722	5409773	323	9	-41.463350	146.74520	0	-90
DL167	479226	5409600	318	6	-41.464920	146.75123	0	-90	DL277	478648	5409848	321	9	-41.462671	146.74432	0	-90
DL168	479271	5409688	318	6	-41.464130	146.75178	0	-90	DL278	478584	5409925	324	9	-41.461980	146.74356	0	-90
DL169	479285	5409784	314	6	-41.463267	146.75194	0	-90	DL279	478525	5410000	319	12	-41.461299	146.74286	0	-90
DL170	479301	5409906	302	5	-41.462169	146.75214	0	-90	DL280	478897	5410265	316	7	-41.458928	146.74732	0	-90
DL171	479215	5409962	304	7	-41.461664	146.75111	0	-90	DL281	478754	5410287	320	8	-41.458721	146.74560	0	-90
DL172	479114	5409999	304	6	-41.461329	146.74991	0	-90	DL282	478629	5410319	320	9	-41.458433	146.74411	0	-90
DL173	478971	5410019	299	6	-41.461147	146.74819	0	-90	DL284	478494	5410326	316	5	-41.458366	146.74249	0	-90
DL174	479334	5410094	299	2	-41.460477	146.75254	0	-90	DL285	478723	5410243	321	10	-41.459117	146.74524	0	-90
DL175	479505	5409993	308	5	-41.461387	146.75459	0	-90	DL287	478836	5410148	323	12	-41.459976	146.74658	0	-90
DL176	479481	5409875	305	9	-41.462452	146.75429	0	-90	DL288	478789	5410162	321	9	-41.459852	146.74602	0	-90
DL177	479453	5409774	310	5	-41.463361	146.75395	0	-90	DL289	478748	5410171	323	15	-41.459771	146.74553	0	-90
DL178	479440	5409678	313	3	-41.464227	146.75380	0	-90	DL291	478610	5410201	322	12	-41.459497	146.74388	0	-90
DL179	479438	5409565	313	5	-41.465245	146.75378	0	-90	DL292	478559	5410212	319	9	-41.459392	146.74327	0	-90
DL180	479252	5409513	307	6	-41.465707	146.75154	0	-90	DL293	478512	5410227	323	6	-41.459262	146.74270	0	-90
DL182	479224	5409289	304	3	-41.467729	146.75120	0	-90	DL294	478531	5410288	325	8	-41.458705	146.74294	0	-90
DL183	479201	5409188	310	7	-41.468638	146.75092	0	-90	DL295	478580	5410276	321	13	-41.458819	146.74352	0	-90
DL184	479181	5409084	315	5	-41.469572	146.75068	0	-90	DL296	478635	5410267	314	17	-41.458905	146.74417	0	-90
DL185	479153	5408913	306	9	-41.471114	146.75033	0	-90	DL298	478771	5410232	322	9	-41.459220	146.74581	0	-90
DL187	479500	5408943	310	7	-41.470849	146.75450	0	-90	DL299	478820	5410220	321	6	-41.459333	146.74639	0	-90
DL188	479523	5408849	306	8	-41.471697	146.75476	0	-90	DL301	478559	5409621	321	5	-41.464715	146.74325	0	-90
DL190	479625	5408667	307	9	-41.473339	146.75598	0	-90	DL302	478611	5409617	323	9	-41.464758	146.74387	0	-90
DL203	479043	5409779	318	9	-41.463303	146.74905	0	-90	DL303	478655	5409604	320	9	-41.464872	146.74439	0	-90
DL214	478805	5409767	324	15	-41.463409	146.74620	0	-90	DL304	478516	5409555	319	7	-41.465310	146.74273	0	-90
DL215	478737	5409815	325	12	-41.462977	146.74538	0	-90	DL305	478571	5409546	324	7	-41.465397	146.74339	0	-90
DL216	478785	5409802	328	12	-41.463090	146.74597	0	-90	DL306	478622	5409533	323	9	-41.465513	146.74400	0	-90
DL217	478646	5409921	316	12	-41.462020	146.74429	0	-90	DL307	478916	5409847	342	9	-41.462693	146.74752	0	-90
DL218	478696	5409914	318	12	-41.462081	146.74490	0	-90	DL308	478968	5409831	339	12	-41.462840	146.74815	0	-90
DL219	478757	5409902	322	9	-41.462190	146.74563	0	-90	DL309	479013	5409815	338	8	-41.462978	146.74869	0	-90
DL220	478808	5409887	326	12	-41.462328	146.74624	0	-90	DL311	479062	5409836	347	12	-41.462795	146.74928	0	-90
DL221	478819	5409966	330	12	-41.461616	146.74637	0	-90	DL312	478971	5410253	319	10	-41.459036	146.74821	0	-90
DL222	478766	5409974	319	9	-41.461539	146.74574	0	-90	DL313	479010	5410191	320	10	-41.459595	146.74867	0	-90
DL223	478713	5409988	323	10	-41.461418	146.74510	0	-90	DL314	478995	5410144	321	9	-41.460016	146.74849	0	-90
DL224	478650	5410008	322	12	-41.461236	146.74435	0	-90	DL315	478971	5410094	319	10	-41.460465	146.74820	0	-90
DL225	478650	5410067	320	9	-41.460700	146.74435	0	-90	DL316	479079	5409888	320	5	-41.462322	146.74948	0	-90
DL226	478708	5410055	316	8	-41.460814	146.74504	0	-90	DL317	479111	5409825	324	9	-41.462896	146.74986	0	-90
DL227	478807	5410034	319	9	-41.461006	146.74623	0	-90	DL318	479163	5409819	324	4	-41.462947	146.75049	0	-90
DL228	478860	5410021	322	8	-41.461124	146.74687	0	-90	DL319	479213	5409804	327	9	-41.463083	146.75108	0	-90
DL229	478802	5410091	326	12	-41.460491	146.74618	0	-90	DL320	479202	5409750	321	8	-41.463570	146.75095	0	-90
DL230	478747	5410097	323	12	-41.460439	146.74552	0	-90	DL321	479222	5409690	316	7	-41.464110	146.75119	0	-90
DL231	478705	5410116	322	12	-41.460261	146.74502	0	-90	DL324	479352	5409900	320	7	-41.462228	146.75275	0	-90
DL232	478655	5410121	321	9	-41.460216	146.74441	0	-90	DL327	479087	5409719	327	9	-41.463846	146.74957	0	-90
DL233	478609	5410132	321	9	-41.460115	146.74386	0	-90	DL328	479094	5409778	326	7	-41.463317	146.74966	0	-90
DL234	478553	5410143	316	9	-4												

Hole	Coordinates (GDA94)			Hole length m	WGS84 55S		Hole Direction	
	Easting	Northing	Collar RL Elevation		Latitude	Longitude	Azimuth	Dip
DL389	478741	5409403	319	20	-41.466684	146.74541	0	-90
DL390	478922	5409764	324	16	-41.463436	146.74759	0	-90
DL391	479474	5409850	322	10	-41.462683	146.75421	0	-90
DL392	479568	5409893	306	10	-41.462292	146.75534	0	-90
DL393	479359	5410196	277	7	-41.459563	146.75284	0	-90
DL394	478559	5410030	318	12	-41.461032	146.74325	0	-90
DL395	478963	5410184	306	14	-41.459661	146.74811	0	-90
DL396	479009	5410241	307	6	-41.459148	146.74866	0	-90
DL397	479075	5410182	323	6	-41.459680	146.74944	0	-90
DL398	479204	5410206	315	3	-41.459464	146.75099	0	-90
DL399	478576	5410310	316	7	-41.458519	146.74348	0	-90
DL400	478490	5410376	309	5	-41.457911	146.74245	0	-90
DL401	478502	5410423	301	2	-41.457492	146.74259	0	-90
DL402	478426	5410296	311	6	-41.458633	146.74168	0	-90
DL403	478481	5410204	307	10	-41.459462	146.74234	0	-90
DL404	478429	5410213	311	4	-41.459385	146.74170	0	-90
DL405	478251	5410304	300	4	-41.458553	146.73958	0	-90
DL407	478071	5410014	309	10	-41.461161	146.73742	0	-90
DL408	478413	5409895	321	10	-41.462248	146.74151	0	-90
DL409	478209	5409481	311	10	-41.465971	146.73905	0	-90
DL410	478533	5409657	313	7	-41.464393	146.74294	0	-90
DL411	478951	5409937	318	8	-41.461878	146.74795	0	-90
DL412	479305	5409585	322	7	-41.465064	146.75217	0	-90
DL413	479183	5409401	327	15	-41.466718	146.75071	0	-90
DL414	479470	5409313	314	3	-41.467520	146.75414	0	-90
DL415	479484	5410102	303	8	-41.460408	146.75434	0	-90
DL416	479400	5409690	340	3	-41.464115	146.75332	0	-90
DL418	479488	5409590	305	4	-41.460823	146.75709	0	-90
DL417	479714	5410057	325	4	-41.465022	146.75437	0	-90
DL419	479527	5409455	306	2	-41.466246	146.75471	0	-90

Portrush REE holes

PORTRUSH RARE EARTH ELEMENTS PROJECT DRILLHOLES								
Hole	Coordinates (GDA94)			Hole length m	WGS84 55S		Hole Direction	
	Easting	Northing	Collar RL Elevation		Latitude	Longitude	Azimuth	Dip
PR003	518441	5409931	134	6	-41.462002	147.22082	0	-90
PR004	518405	5410042	133	6	-41.461005	147.22038	0	-90
PR005	518464	5410029	128	6	-41.461117	147.22110	0	-90
PR006	518356	5409964	146	15	-41.461702	147.21980	0	-90
PR007	518301	5409913	130	5	-41.462162	147.21914	0	-90
PR009	518834	5410310	96	9	-41.458573	147.22551	0	-90
PR013	518442	5410333	151	8	-41.458379	147.22082	0	-90
PR014	518496	5410362	153	11	-41.458115	147.22146	0	-90
PR021	518469	5410544	167	12	-41.456479	147.22114	0	-90
PR024	518470	5410837	158	12	-41.453839	147.22114	0	-90
PR026	518462	5410756	160	12	-41.454569	147.22105	0	-90
PR028	519109	5410750	182	12	-41.454604	147.22879	0	-90
PR033	519385	5410723	203	13	-41.454848	147.23210	0	-90
PR037	519363	5410675	214	18	-41.455276	147.23183	0	-90
PR038	519352	5410655	216	23	-41.455458	147.23171	0	-90
PR041	519475	5410659	219	16	-41.455418	147.23318	0	-90
PR043	519638	5410669	219	6	-41.455325	147.23512	0	-90
PR052	519713	5410591	231	26	-41.456025	147.23603	0	-90
PR053	519464	5410600	219	24	-41.455946	147.23305	0	-90
PR054	519264	5410700	199	18	-41.455058	147.23065	0	-90
PR059	518874	5410513	145	11	-41.456751	147.22599	0	-90
PR061	518926	5410486	157	13	-41.456986	147.22661	0	-90
PR066	518997	5409999	157	9	-41.461376	147.22748	0	-90

Tasmania: The information relating to Exploration Information and Mineral Resources in Tasmania has been prepared or updated under the JORC Code 2012. Mr Rebek and Mr Levy have sufficient experience, which is relevant to the style of mineralisation and type of deposit under consideration and to the activity, which they are undertaking to qualify as a Competent Person as defined in the 2012 Edition of the Australasian Code for Reporting of Exploration Results, Mineral Resources and Ore Reserves. Mr Rebek and Mr Levy have consented in writing to the inclusion in this report of the Exploration Information in the form and context in which it appears.

Wind Break REE holes

PORTRUSH RARE EARTH ELEMENTS PROJECT DRILLHOLES								
Hole	Coordinates (GDA94)			Hole length m	WGS84 55S		Hole Direction	
	Easting	Northing	Collar RL Elevation		Latitude	Longitude	Azimuth	Dip
WB001	491485	5412937	201	14	-41.435091	146.89809	0	-90
WB002	491432	5413006	186	15	-41.434467	146.89744	0	-90
WB003	491460	5412973	192	15	-41.434769	146.89778	0	-90
WB005	491372	5413074	156	15	-41.433858	146.89673	0	-90
WB007	491353	5413215	191	15	-41.432581	146.89651	0	-90
WB008	491392	5413280	200	5	-41.431996	146.89697	0	-90
WB009	491390	5413402	191	11	-41.430898	146.89695	0	-90
WB010	491507	5413387	202	9	-41.431041	146.89834	0	-90
WB015	491488	5413052	197	12	-41.434051	146.89812	0	-90
WB016	491572	5413010	194	14	-41.434432	146.89912	0	-90
WB017	491707	5412987	197	12	-41.434639	146.90073	0	-90
WB020	490799	5413151	204	12	-41.433156	146.88988	0	-90
WB021	490717	5413150	206	9	-41.433166	146.88889	0	-90
WB024	490124	5413440	196	8	-41.430539	146.88180	0	-90
WB025	490719	5412949	195	15	-41.434977	146.88891	0	-90
WB026	490791	5412928	197	12	-41.435162	146.88978	0	-90
WB027	491286	5412800	185	12	-41.436325	146.89569	0	-90
WB028	491216	5412744	194	20	-41.436826	146.89486	0	-90
WB029	491293	5412845	192	9	-41.435913	146.89578	0	-90
WB030	491265	5412882	190	9	-41.435579	146.89544	0	-90
WB059	491265	5412569	196	15	-41.438405	146.89544	0	-90
WB060	491255	5412503	195	6	-41.438995	146.89532	0	-90
WB061	491232	5412440	168	6	-41.439562	146.89504	0	-90
WB063	491232	5412324	192	7	-41.440611	146.89504	0	-90
WB064	491224	5412256	183	14	-41.441220	146.89494	0	-90
WB065	491212	5412180	181	12	-41.441902	146.89480	0	-90
WB066	491191	5412031	180	20	-41.443246	146.89454	0	-90
WB068	491292	5412791	194	6	-41.436401	146.89577	0	-90
WB070	491008	5412622	179	12	-41.437925	146.89237	0	-90
WB071	491027	5412533	190	9	-41.438725	146.89259	0	-90
WB121	491729	5412796	197	4	-41.436349	146.90100	0	-90
WB122	491536	5412721	210	13	-41.437024	146.89870	0	-90
WB123	491116	5413317	196	2	-41.431652	146.89368	0	-90
WB124	491107	5413131	206	3	-41.433322	146.89357	0	-90
WB125	491514	5412882	198	10	-41.435568	146.89843	0	-90

Qualifying statements

General: The information in this report that relate to Exploration Information and Mineral Resources are based on information compiled by Jacob Rebek and Ian Levy who are members of The Australasian Institute of Mining and Metallurgy and the Australian Institute of Geoscientists. Mr Rebek and Mr Levy are qualified geologists and Mr Levy is a director of ABx Group Limited.